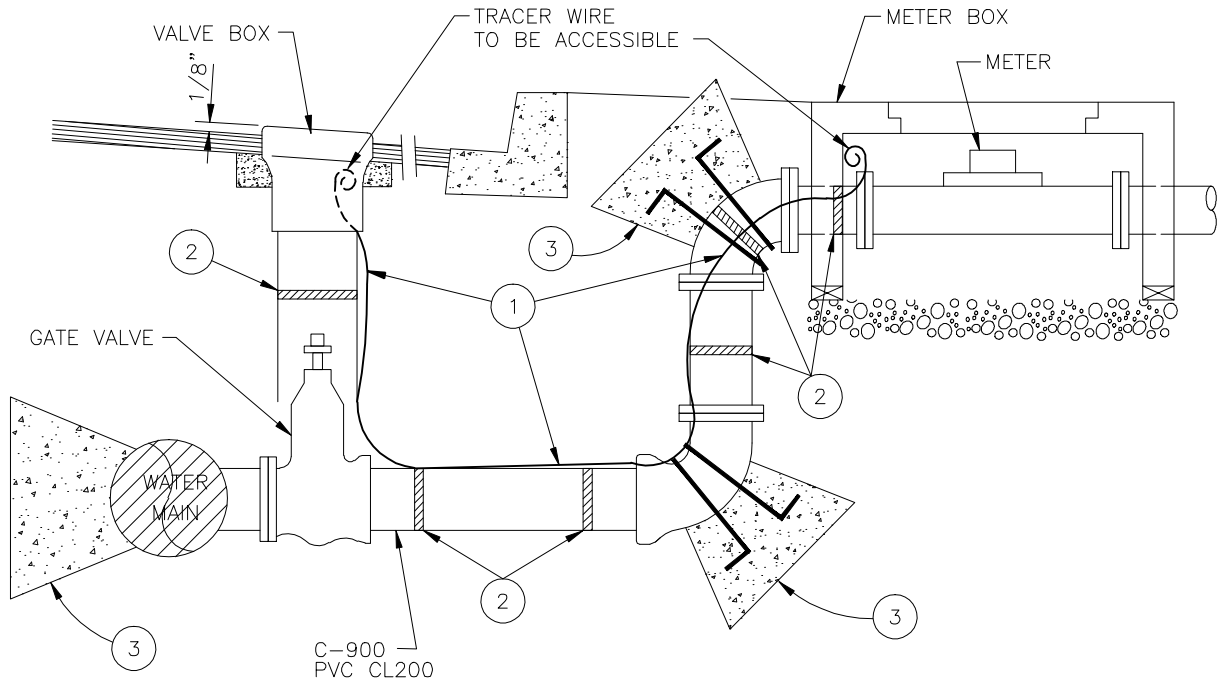


## RECYCLED WATER



### STANDARD DRAWING MATERIALS

ITEM	QTY	SIZE / DESCRIPTION	MATERIAL SPECIFICATIONS	REMARKS
1	1	TRACER WIRE	NO. 14 COPPER WITH HMWPE INSULATION	SEE SECTION 4
2	1	PIPE WRAP TAPE	10 MIL WINMORE UPC, POLYKEN 900, SCOTCHWRAP 5 OR APPROVED EQUAL	SEE SECTION 4.3.3H
3	3	CONC. THRUST BLOCK	2000 PSI PER ASTM C-39 OR READY MIX PER ASTM C-94	SEE SECTION 4.4 AND STANDARD DRAWING W-17

#### NOTES:

<b>A</b>	ALL BURIED FERROUS SURFACES, PIPES, AND FITTINGS SHALL BE PROTECTED AND POLYETHYLENE ENCASED PER SECTIONS 4.2.3 AND 4.3.3
<b>B</b>	ALL NUTS, BOLTS, AND WASHERS SHALL BE STAINLESS STEEL PER SECTION 4.3.3
<b>C</b>	ALL PIPES AND FITTINGS SHALL BE IDENTIFIED WITH BURIED PIPE WRAP TAPE PER SECTION 4.3.3H
<b>D</b>	ALL BACKFILL SHALL CONSIST OF NATIVE MATERIALS (95% REL. COMPACTION) OR C.A.B. PER STD. DWG. No. S-25 AND PER SECTION 4.8
<b>E</b>	A VALVE EXTENSION MAY BE REQUIRED. INSTALL PER SECTION 4.3.2C AND STD. DRAWINGS W-32 OR RW-10
<b>F</b>	ALL INSTALLATIONS TO CONFORM WITH SECTION 3 AND SECTION 4 AS APPROPRIATE
<b>G</b>	THRUST BLOCK CAN BE INSTALLED ON OPPOSITE END OF ELBOW IF REQUIRED DUE TO LACK OF COVER UPON CITY APPROVAL

## PICO WATER DISTRICT

### TYPICAL TRACER WIRE INSTALLATION

APP. *Mark J. Grajeda*

MARK J. GRAJEDA  
GENERAL MANAGER

STANDARD  
DRAWING NUMBER

RW-5

DATE: SEPT 2008