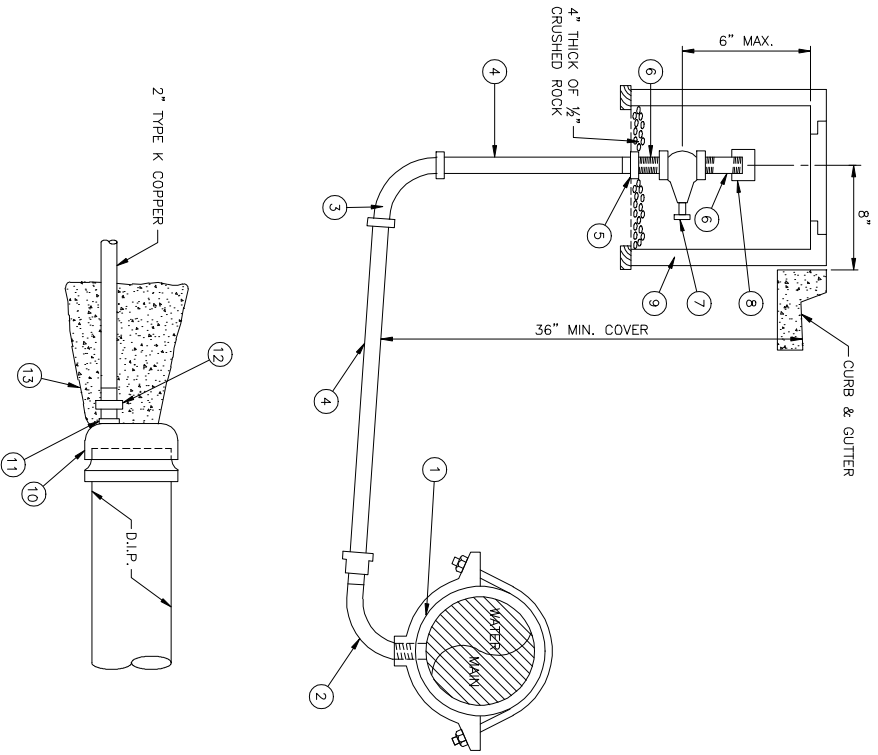


STANDARD DRAWING MATERIALS

ITEM	QTY	SIZE / DESCRIPTION	MATERIAL SPECIFICATIONS	REMARKS
1	1	2" BRONZE SADDLE OR	MUELLER BR 2B	SEE SECTION 4
1	1	2" BRONZE AND STAINLESS STEEL SADDLE FOR RECYCLED WATER APPLICATIONS	MUELLER BR 2BS	SEE SECTION 4
2	1	2" COMPRESSION 90° CTS	MUELLER H-15531	SEE SECTION 4
3	3	2" X M.I.P. THREAD.	MUELLER H-15526	SEE SECTION 4
4	1	2" TYPE K COPPER TUBING	ANSI/AMWA C-800	SEE SECTION 4
5	2	2" STRAIGHT COMPRESSION COUPLING CTS X F.I.P. THREAD	MUELLER H-15451	SEE SECTION 4
6	2	2" BRASS CLOSE NIPPLE 1-P THREAD		
7	2	2" BRASS BALL VALVE F.I.P. X F.I.P. THREAD	MUELLER B-20283-3	
8	2	2" ABS PLASTIC PLUG M.I.P. THREAD		
9	4	CONCRETE METER BOX	EISEL MODEL #37 W/ CAST IRON TRAFFIC COVER	SEE SECTION 4.9.10 AND STANDARD DRAWING W-25
10	1	DUCTILE IRON MECHANICAL JOINTED WITH 2.5" F.I.P. TYPICALLY USED FOR DELRIN OR APPROVED EQUAL	FLYER UNION GLASS 350, OR APPROVED FORB UNI-FLANGE GLAND	SEE SECTION 4 AND STANDARD DRAWING W-16
11	1	2 1/2" X 2" DIELECTRIC NYLON HEX BUSHING	DELRIN OR APPROVED EQUAL	SEE STANDARD DRAWINGS W-16 AND W-24
12	1	2" STRAIGHT COMPRESSION COUPLING, CTS X M.I.P.	MUELLER H14528	SEE SECTION 4
13	1	CONC. THRUST BLOCK	2000 PSI PER ASTM C-39 OR READY MIX PER ASTM C-94	SEE SECTION 4.4 AND STANDARD DRAWING W-17



ALTERNATE FOR CONNECTION AT END OF MAIN

PICO WATER DISTRICT

2" BLOW-OFF ASSEMBLY
myranda
 APP. GENERAL CONTRACTOR GENERAL NUMBER

STANDARD DRAWING NUMBER
W-13
 DATE: 08/17/2000