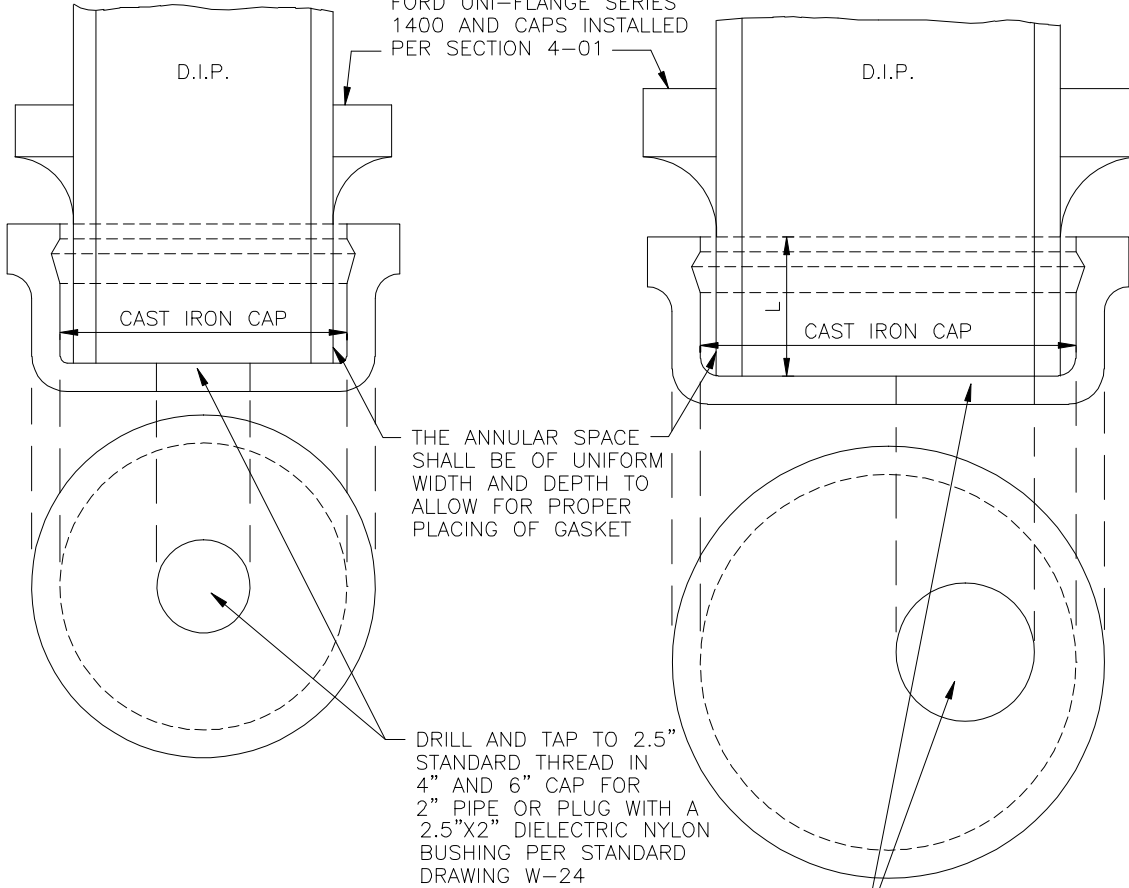


M.J. GLAND SHALL BE EBAA IRON MEGALUG OR FORD UNI-FLANGE SERIES 1400 AND CAPS INSTALLED PER SECTION 4-01



TAPPED CAPS			
SIZE INCHES	TAP INCHES	L INCHES	WEIGHT POUNDS
4	2.5	4.60	27
6	2	4.65	40
8	3	4.75	59
10	3	4.75	84
12	3	4.75	108

DRILL AND TAP TO 3" STANDARD THREAD IN 8", 10" AND 12" PLUG FOR A 2" PIPE OR PLUG WITH A 2.5"x2" DIELECTRIC NYLON BUSHING PER STANDARD DRAWING W-24

UNLESS OTHERWISE SHOWN ON THE PLANS, A 2" OR 3" CAST IRON PLUG SHALL BE FURNISHED WITH EACH TAPPED AND THREADED CAP

NOTES:

A	ALL BURIED FERROUS SURFACES, PIPES, AND FITTINGS SHALL BE PROTECTED AND POLYETHYLENE ENCASED PER SECTIONS 4.2.3 AND 4.3.3
B	THRUST BLOCKS WILL BE REQUIRED ON ALL CAPS PER SECTION 4.4 AND STANDARD DRAWING W-17
C	ALL PIPES AND FITTINGS SHALL BE IDENTIFIED WITH BURIED PIPE WRAP TAPE PER SECTION 4.3.3H
D	ALL BACKFILL SHALL CONSIST OF NATIVE MATERIALS (95% REL. COMPACTION) OR C.A.B. PER STD. DWG. No. S-25 AND PER SECTION 4.8
E	THESE MATERIALS SHALL APPLY TO ALL POTABLE AND RECYCLED WATER SYSTEMS
F	ALL INSTALLATIONS TO CONFORM WITH SECTION 3 AND SECTION 4 AS APPROPRIATE

PICO WATER DISTRICT

**CAST IRON CAPS
FOR D.I. PIPE**

APP. _____

mjgrajeda
**MARK J. GRAJEDA
GENERAL MANAGER**

STANDARD
DRAWING NUMBER

W-16

DATE: SEPT 2008