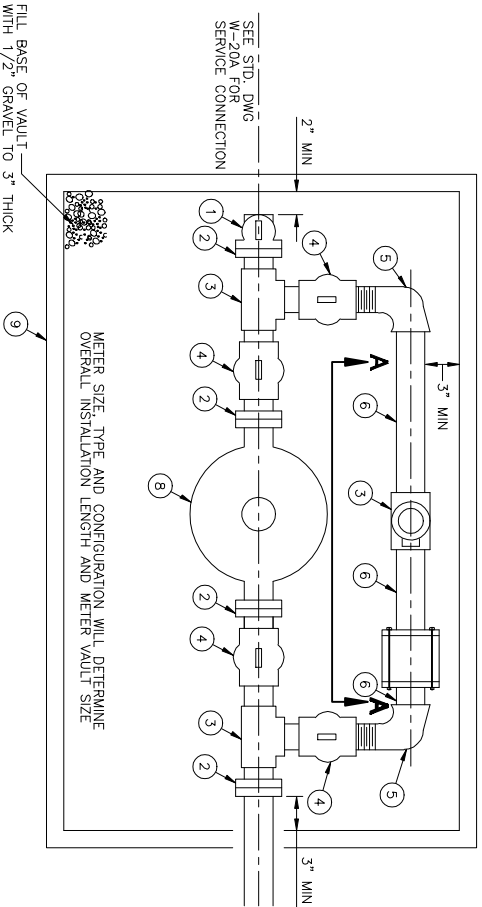


SECTION A-A



STANDARD DRAWING MATERIALS

ITEM	QTY	SIZE / DESCRIPTION	MATERIAL SPECIFICATIONS	REMARKS
1	1	2" BRONZE COMPRESSION LOCK WING	MUELLER 101 H-14277	SEE SECTION 4
2	4	2" BRONZE METER COMPANION FLANGE X M.I.P.	JONES J-129 M, FORD CF 38-77-2:125 OR APPROVED EQUAL	SEE SECTION 4
3	3	2" BRASS TEE F.I.P.		
4	5	2" BALL METER VALVE W/LOCK WING M.I.P. X F.I.P.	FORD B11-777W OR APPROVED EQUAL	
5	2	2" BRASS STREET ELL 90° M.I.P. X F.I.P.		
6	1	2" BRASS PIPE, LENGTH AS REQUIRED, THREADED AS REQUIRED		
7	1	2" DUCTILE IRON PIPE COUPLING	SMITH BLAIR MODEL 441 OR APPROVED EQUAL	SEE SECTION 4
8	1	2" METER	METER TYPE AND CONFIGURATION TO BE DETERMINED BY THE WATER SUPERINTENDENT	METER TO BE PURCHASED FROM AND FURNISHED BY THE CITY SEE SECTION 4.9
9	1	CONCRETE METER VAULT WITH 2 PIECE COVER AND READING LIDS	BROOKS MODEL 700 SERIES OR APPROVED EQUAL. SIZE DETERMINED BY METER CONFIGURATION	SEE SECTION 4.9 AND STANDARD DRAWING W-30

NOTES:

- A** ENTIRE METER AND BYPASS ASSEMBLY SHALL BE INSIDE OF METER VAULT
- B** ALL SERVICES SHALL CONFORM WITH SECTION 4.9
- C** ALL BURIED FERROUS SURFACES, PIPES, AND FITTINGS SHALL BE PROTECTED AND POLYETHYLENE ENCASED PER SECTIONS 4.2.3 AND 4.3.3.
- D** ALL PIPES AND FITTINGS SHALL BE IDENTIFIED WITH BURIED PIPE WRAP TAPE PER SECTION 4.3.3H
- E** ALL INSTALLATIONS TO CONFORM WITH SECTION 3 AND SECTION 4 AS APPROPRIATE

1 1/2" 2" METER SPACERS AND METER LAY LENGTHS

2" COMPOUND W/STRAINER
22 3/8"

METER TYPE AND CONFIGURATION TO BE DETERMINED BY THE WATER UTILITY ADMINISTRATOR

PICO WATER DISTRICT

2" METER INSTALLATION WITH BYPASS

 MICHAEL GONZALEZ
 GENERAL MANAGER

STANDARD DRAWING NUMBER
W-20B
 DATE: 08/12/2009