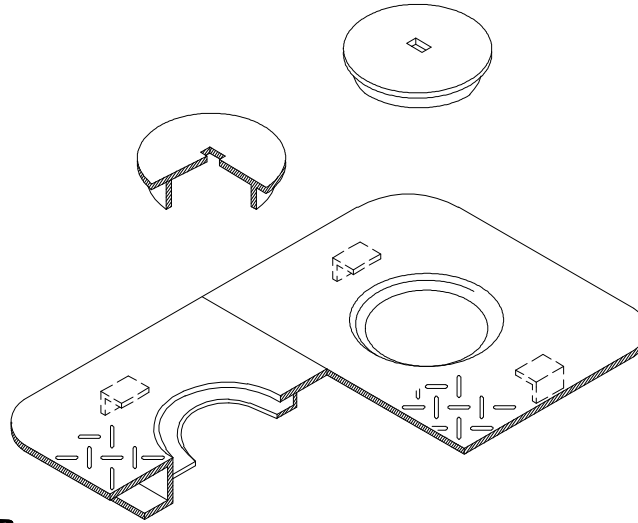
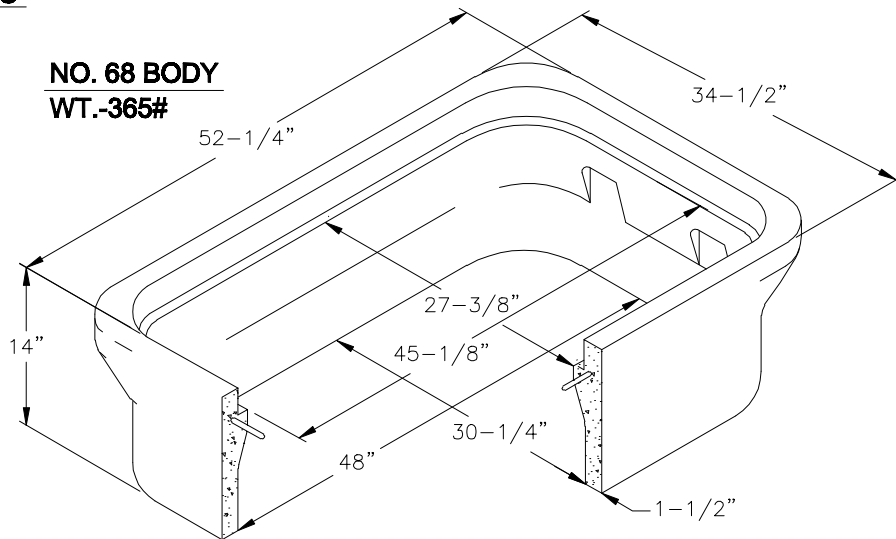


**NO. 68 2 PIECE COVER  
W/READING LID  
WT.-270#  
OR**

**NO. 68T 2 PIECE  
STEEL TRAFFIC COVER  
W/READING LIDS  
WT.-201#**



**NO. 68 BODY  
WT.-365#**



**NOTE:**

EXTENSION(S) AS REQ.

**PICO WATER DISTRICT**

**3", 4" & 6" COMPOUND METER BOX, BROOKS;  
ARMORCAST OR EQUAL WITHOUT BYPASS**

APP.           mjgrajeda            
**MARK J. GRAJEDA  
GENERAL MANAGER**

STANDARD  
DRAWING NUMBER

**W-29**

DATE: SEPT 2008