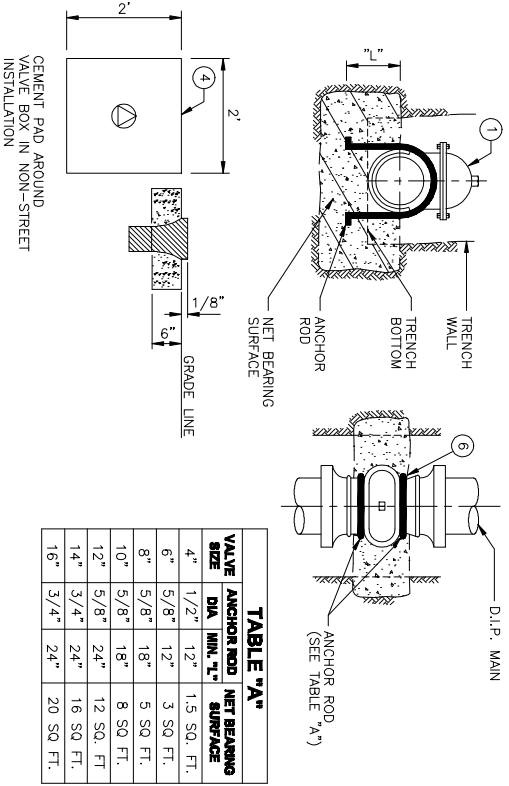


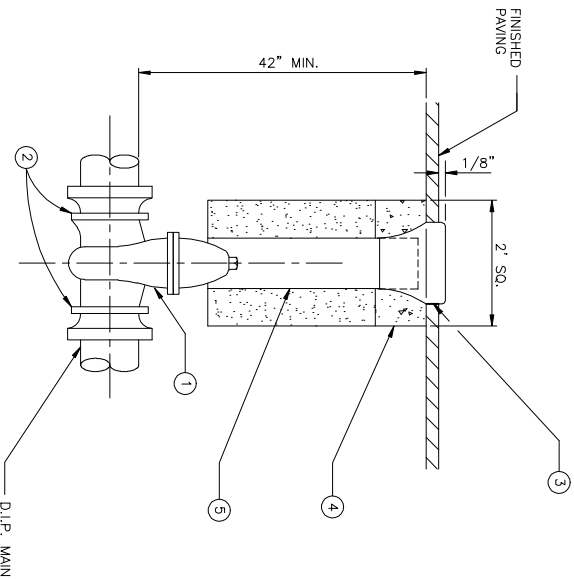
**ANCHOR FOR M.J. AND R.T. VALVES**



**STANDARD DRAWING MATERIALS**

ITEM	QTY	SIZE / DESCRIPTION	MATERIAL SPECIFICATIONS	REMARKS
1	1	MECHANICAL JOINT GATE VALVE	WUELLER RS. SERIES 2361	SEE SECTION 4.3
2	2	DUCTILE IRON RESTRAINT GLAND	FEMA IRON MEGALUS. FORD UNI-FLANGE SERIES 1400 OR APPROVED EQUAL	SEE SECTION 4.3
3	1	VALVE BOX	BROOKS 4 TT (POTABLE), BROOKS 10R (RECYCLED) OR APPROVED EQUAL	SEE SECTION 4.3 2D AND STANDARD DRAWING W-31 OR SECTION 4.3.2E AND STANDARD DRAWING RW-10 AS APPROPRIATE
4	1	CONCRETE PAD	2000 PSI PER ASTM C-39 OR READY MIX ASTM C-94	SEE SECTION 4.5
5	1	FLU PIPE	8" C-900 OR CLASS 200 PVC PIPE	SEE SECTION 4.3 AND STANDARD DRAWING W-31 OR AS APPROPRIATE
6	2	ANCHOR RODS	STEEL REINFORCING BAR	SEE SECTION 4.4.4 AND STANDARD DRAWING W-17

**PERMANENT VALVE BOX**



**NOTES:**

- A** VALVE AND FITTINGS SHALL BE PROTECTED AND POLYETHYLENE ENCASED PER SECTION 4.3
- B** VALVE BEARING AREAS ARE TO BE DESIGNED AGAINST UNDISTURBED SOIL WITH A SUFF. LATERAL BEARING VALUE OF 1500 LBS PER SQUARE FOOT. ADJUSTMENT SHALL BE MADE FOR OTHER SOILS
- C** A VALVE STEM EXTENSION MAY BE REQUIRED. INSTALL PER SECTION 4.3.2C AND STANDARD DRAWING W-32 OR THE STALL CONSIST OF NATIVE MATERIALS (95% REL. COMPACTION) OR C.A.B. PER STD. DWG. NO. S-23 AND PER SECTION 4.3
- D** VALVE BOXES SHALL BE INSTALLED 1/8" ABOVE FINISHED GRADE
- E** FACE OF CURB SHALL BE MARKED WITH A "V" AND MEASUREMENT IN FEET FROM CURB FACE TO VALVE
- F** ALL INSTALLATIONS TO CONFORM WITH SECTION 3 AS APPROPRIATE
- G** ALL INSTALLATIONS TO CONFORM WITH SECTION 3 AS APPROPRIATE
- H** INSTALL NO. 14 COPPER TRACER WIRE IF INSTALLING C900 PVC MAIN

**PICO WATER DISTRICT**

VALVE AND VALVE BOX INSTALLATION  
*Myra J. Gammal*  
 APP. MYRA J. GAMMAL  
 GENERAL MANAGER

STANDARD DRAWING NUMBER  
**W-8**  
 DATE: 08/17/2000